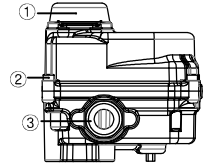
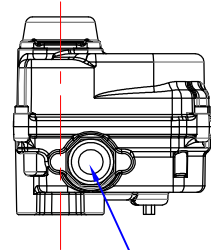
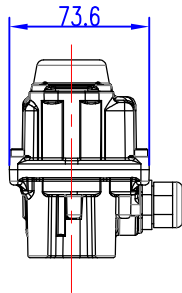
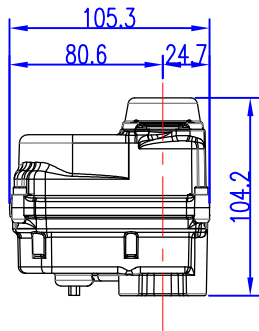
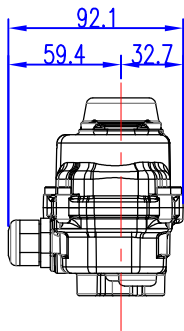
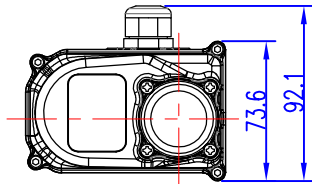


Electric actuator / KE002

KE002 (AC)



REV.NO.	REVISION DESCRIPTION	DRAWN / DATE	APPROVED / DATE
△	최초작성	노을아/150318	
△	-	-	

SPECIFICATIONS

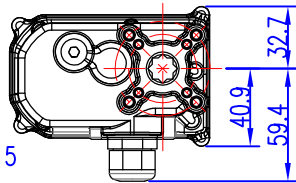
1. Type : Quarter-turn for Rotary
2. Power : 220C AC/110V AC/24V DC
3. Operating temperature : -20~60°
4. Weight : Kg

MAJOR PART LIST

NO.	PART NAME	MATERIAL
1	WINDOW	ENGINEERING PLASTIC (PC)
2	BOLT	STAINLESS STEEL
3	CABLE ENTRY	ENGINEERING PLASTIC

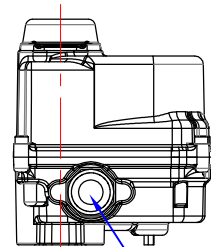
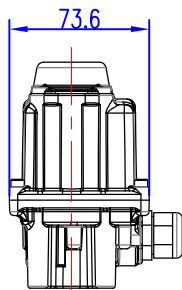
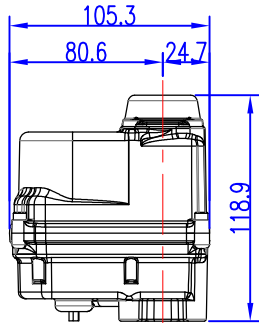
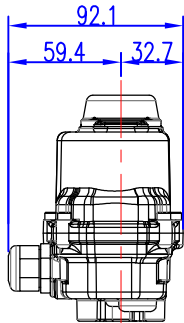
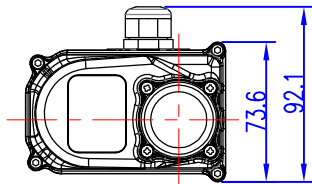
PG11
Wire : 1000mm

ISO 5211
F03/M5 TAP DP12
F05/M6 TAP DP12



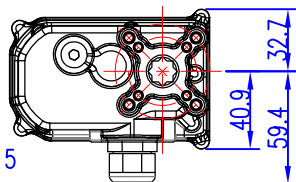
11 STAR DP15

KE002 (DC)



PG11
Wire : 1000mm

ISO 5211
F03/M5 TAP DP12
F05/M6 TAP DP12



11 STAR DP15

PRODUCT NAME Electric actuator		KOSAPLUS Co.,Ltd	
MODEL KE002		TITLE DRAWING	
MATERIAL -	HARDNESS -	DRAWING NO. EAKE002-001	REV. 0
DRAWING DATE	APPROVED DATE		

Electric actuator / KE004

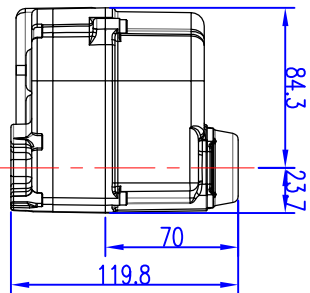
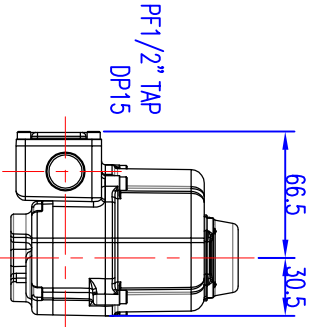
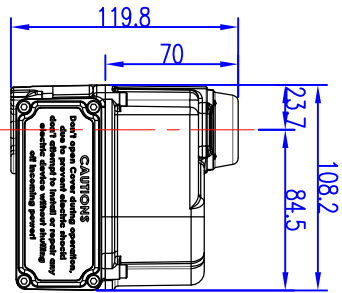
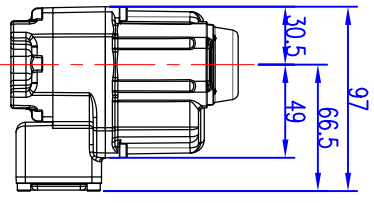
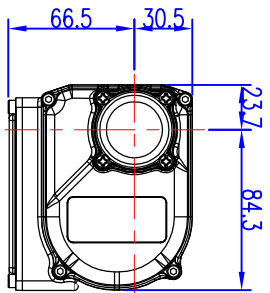
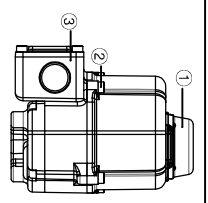
REV.NO.	REVISION DESCRIPTION	DRAWN / DATE	APPROVED / DATE
△	최초작성	노을아/141210	
▽	-	-	

SPECIFICATIONS

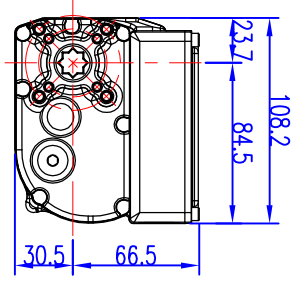
1. Type : Quarter-turn for Rotary
2. Power : 220C AC/110V AC/24V DC
3. Operating temperature : -20~60
4. Weight : 1.5kg

MAJOR PART LIST

NO.	PART NAME	MATERIAL
1	WINDOW	ENGINEERING PLASTIC (PC)
2	BOLT	STAINLESS STEEL
3	BODYCOVER	ALUMINUM



ISO 5211
F03/M5 TAP DP12
F05/M6 TAP DP12
11 STAR DP15

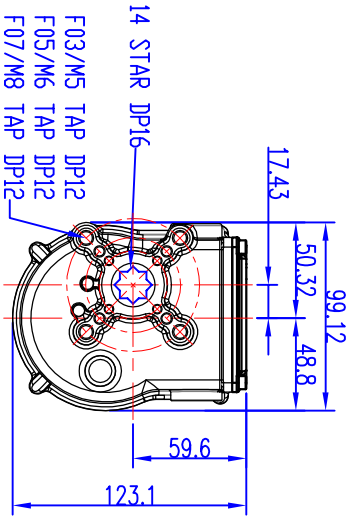
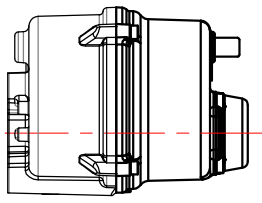
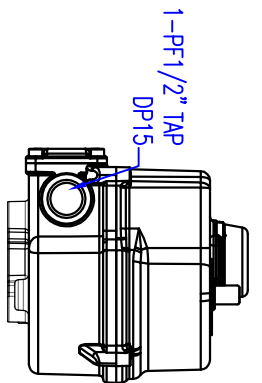
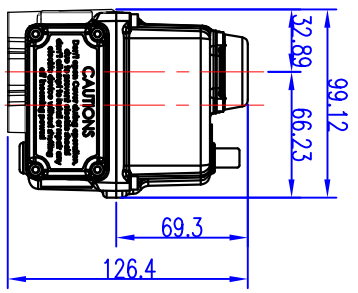
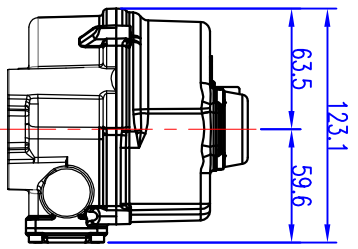
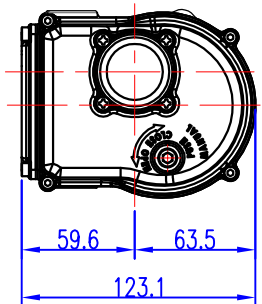


PF1/2" TAP
DP15

CAUTIONS
Do not operate the actuator
with the cover removed.
Do not attempt to install or repair any
parts without the cover removed.
Do not touch the internal parts
and incoming power!

PRODUCT NAME Electric actuator		TITLE DRAWING	
MODEL KE004	HARDNESS -	DRAWING NO. EAKE004-001	
DRAWING DATE	APPROVED DATE	REV. 3	
KOSAPLUS Co.,Ltd			

Electric actuator / KE005



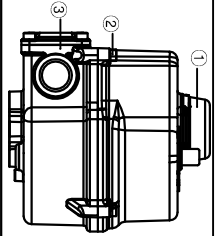
REV.NO.	REVISION DESCRIPTION	DRAWN / DATE	APPROVED / DATE
△	모형명 수정 및 결선도 삭제	노을아 / 140422	
△	바닥 STEM 및 베이스 수정/포트1개 가감	노을아 / 150915	

SPECIFICATIONS

1. Type : Quarter-turn for Rotary
2. Power : 220C AC/110V AC/24V DC
3. Operating temperature : -20~60
4. Weight : 1.3kg

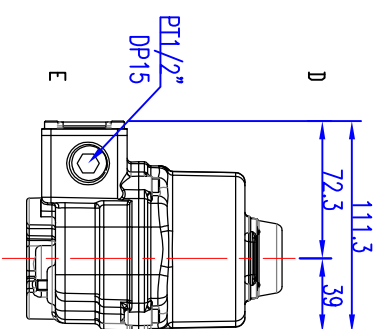
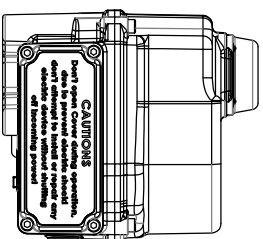
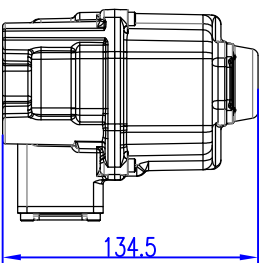
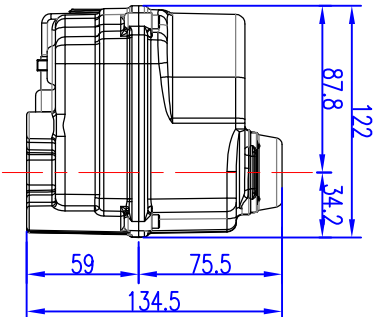
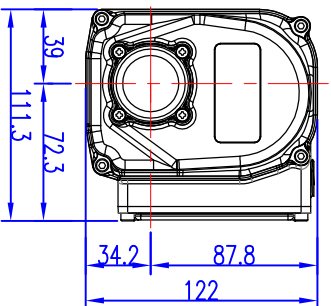
MAJOR PART LIST

NO.	PART NAME	MATERIAL
1	WINDOW	ENGINEERING PLASTIC (PC)
2	BOLT	STAINLESS STEEL
3	BODYCOVER	ALUMINUM

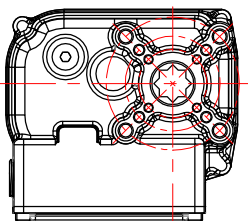


PRODUCT NAME Electric actuator		TITLE DRAWING	
MODEL KE005		DRAWING NO. EAKE005-001	
MATERIAL -		HARDNESS -	
DRAWING DATE		APPROVED DATE	
		REV. 4	
KOSAPLUS Co.,Ltd			

Electric actuator / KE006



14 STAR DP16
 4 ISD 5211
 F03/M5 TAP DP12
 F05/M6 TAP DP12
 F07/M8 TAP DP12



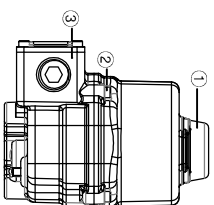
REV. NO.	REVISION DESCRIPTION	DRAWN / DATE	REVISION / DATE	APPROVED / DATE
△	최초작성	노승익 / 150915	-	
△	--	--		

SPECIFICATIONS

1. Type : Quarter-turn for Rotary
2. Power : 110V 220V AC, 24V DC
3. Operating temperature : -20~60
4. Weight : 1.9Kg

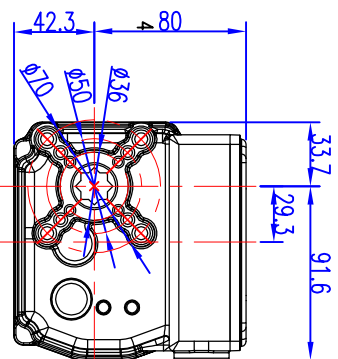
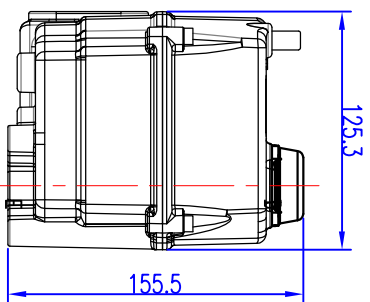
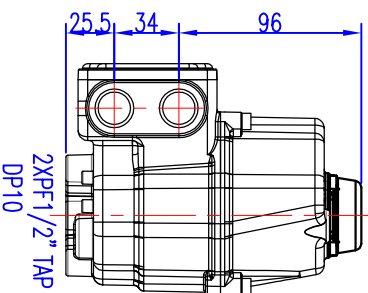
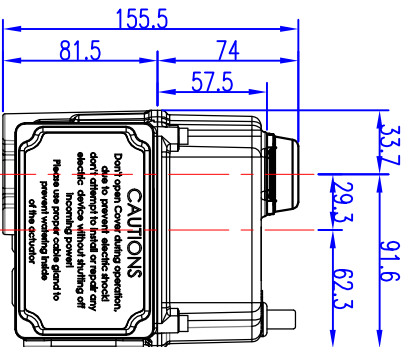
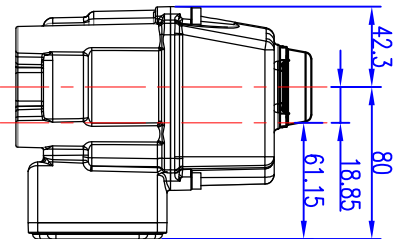
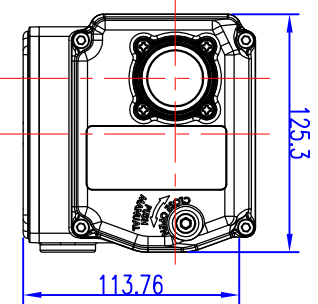
MAJOR PART LIST

NO.	PART NAME	MATERIAL
1	WINDOW	ENGINEERING PLASTIC (PC)
2	BOLT	STAINLESS STEEL
3	BODYCOVER	ALUMINIUM



PRODUCT NAME Electric actuator		KOSAPLUS Co., Ltd	
MODEL KE006	TITLE DRAWING	DRAWING NO. EAKKE006-001	
MATERIAL -	HARDNESS -	APPROVED DATE	REV. 0

Electric actuator / KE008



ISO 5211
 F03/M5 TAP DP12
 F05/M6 TAP DP12
 F07/M8 TAP DP12

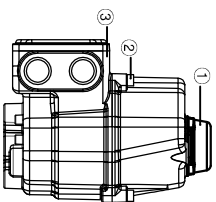
REV. NO.	REVISION DESCRIPTION	DRAWN / DATE	REVISIONED / DATE	APPROVED / DATE
△	최초작성	노윤하 / 131218		
△	모달링 변경 및 결선도 삭제	노윤하 / 140422		

SPECIFICATIONS

1. Type : Quarter-turn for Rotary
2. Power : 110V 220V AC, 24V DC
3. Operating temperature : -20~60
4. Weight : 2.5kg

MAJOR PART LIST

NO.	PART NAME	MATERIAL
1	WINDOW	ENGINEERING PLASTIC (PC)
2	BOLT	STAINLESS STEEL
3	BODYCOVER	ALUMINIUM



PRODUCT NAME		TITLE	
Electric actuator		DRAWING	
MODEL	KE008	KOSAPLUS Co.,Ltd	
MATERIAL	HARDNESS	DRAWING NO. EAKE008-001	
DRAWING DATE	APPROVED DATE	REV. 1	