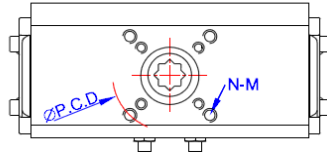
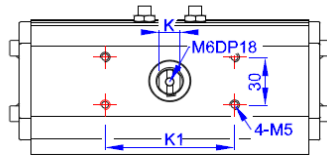
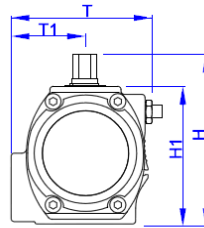
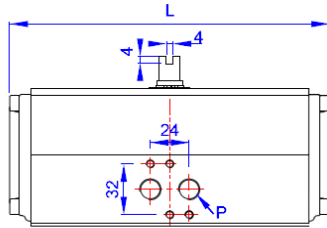
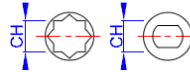


AD SERIES DIMENSION TABLE



MOUNT IMAGE



P	
A50~A210	PT1/4
A250	PT1/4
	PT3/8
	PT1/2

UNIT : mm

MODEL	K1	ISO	P.C.D(ø)	N-G	K	L	T	T1	H	H1	CH	DTH	WG(Kg)
AD50	80	F03/F05/F07	36/50/70	4-M5/M6/M8	9	162	75	40	90	70	11*11	13	1.4
											#14*14	14	
											#9.7*ø15	14	
AD65	80	F05/F07	50/70	4-M6/M8	13	202	89	46	107	87	14*14	17	2.3
											#11*11	13	
											#11.7*ø17	17	
											#9.7*ø15	14	
AD80	80	F07	70	4-M8	13	253	101	49.5	126	106	17*17	19	3.9
											#14.7*ø19	20	
AD100	80	F07/F10	70/102	4-M8/M10	19	311	129	61.5	148	128	22*22	26	6.7
											#17.7*ø22	26	
AD125	80	F07/F10	70/102	4-M8/M10	19	390	151	71.5	174	154	22*22	26	11.3
AD140	80	F10/F12	102/125	4-M10/M12	24	431	164	77	192	172	27*27	30	16.4
											#22*22		
AD160	80	F14	140	4-M16	24	506	188	89	216	196	36*36	30	23.7
		#F10/F12	#102/125	#4-M10/M12							#27*27		
AD185	80/130	F14	140	4-M16	24	578	217	102	244	224	36*36	30	34.8
AD210	130	F16	165	4-M20	36	605	231	115	284	254	46*46	60	45.5
		#F14									#36*36	50	
AD250	130	F16	165	4-M20	36	755	301	152	335	305	46*46	60	65.8
AD300	130	F16/F25	165/254	4-M20/8-M16	36	889	360	170	408	378	55*55	60	165.0

-Model with '#' is optional.

2017.10.12 Norah

RevNo	Revision note	Date	Revisier
23	A65 11*11/A185 상부	17.10.12	Norah
22	A300 무게수정	16.11.03	Norah
21	A185 (K1,K,H) 수정	16.09.20	Norah
20	A300 L,T 수정	16.01.15	Norah
19	A185 무게 수정	15.08.07	Norah

TITLE	DESIGN
Dimension table	Norah
Scotch-yoke	KOSAPLUS Co.,Ltd
Double acting	www.kosaplus.com
FILE NAME	T:(82)31-433-3159
Dimension table	F:(82)31-433-3151