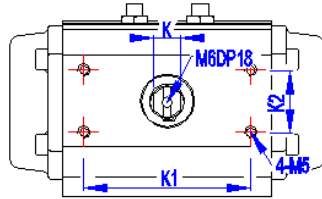
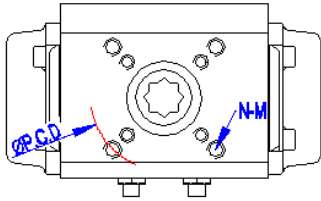
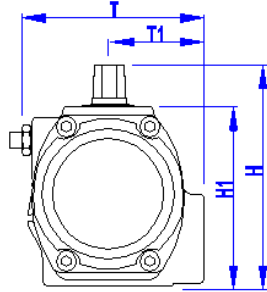
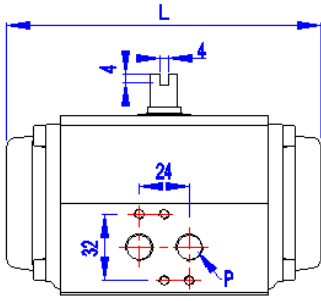
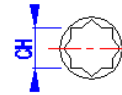


RS SERIES DIMENSION TABLE



MOUNT IMAGE



P	
R32, R40	PT1/8
R50~	PT1/4

UNIT : mm

MODEL	K1	K2	ISO	P.C.D(φ)	N-G	K	L	T	T1	H	H1	CH	DTH	WG(K)
@RS40	50	25	F03/F05	36/50	4-M5/M6	9	97	60	33	74	54	9*9	9	0.6
			#F04	#42	#4-M5									
RS50	80	30	F03/F05/F07	36/50/70	4-M5/M6/M8	9	133	75	40	90	70	11*11	13	1.1
			#F04	#42	#4-M5									
RS65	80	30	F05/F07	50/70	4-M6/M8	13	154	89	46	106.5	86.5	14*14	16	1.5
			#F04	#42	#4-M5									
RS80	80	30	F05/F07	50/70	4-M6/M8	19	220	101	49.5	125	106	17*17	19	3.3
RS90	80	30	F07	70	4-M8	19	223	104	54.5	136	116	17*17	19	3.8
RS100	80	30	F07/F10	70/102	4-M8/M10	19	256	132	61.5	148	128	22*22	26	5.4
												17*17	19	
RS115	80	30	F07/F10	70/102	4-M8/M10	19	302	142	67.5	163	143	22*22	26	7.5
RS125	80	30	F07/F10	70/102	4-M8/M10	19	330	151	71.5	174	154	22*22	26	9.9
RS140	80	30	F10/F12	102/125	4-M10/M12	24	389	164	77	192	172	27*27	30	14.5
												22*22	26	
RS160	80	30	F10/F12	102/125	4-M10/M12	24	416	188	89	216	196	27*27	30	19.5
RS185	80	30	F10/F12	102/125	4-M10/M12	30	465	217	103	244	224	36*36	30	29.0
RS210	130	30	F14	140	4-M16	36	527	231	115	284	254	36*36	30	37.9

-Model with '@' is compact type. They don't have angle stopper.

-Model with '#' is optional.

RevNo	Revision note	Date	Revisier
23	R80 F05추가	17.04.25	Norah
22	R185 ISO 변경	16.10.19	Norah
21	R185 (K1,K,ISO,H) 수정	16.09.20	Norah
20	R65/115,185 수정	15.08.07	Norah
19	R160 T1오타 수정	15.04.15	Norah

TITLE	DESIGN
Dimension table	Norah
Rack&pinion	KOSAPLUS Co.,Ltd
Double acting	www.kosaplus.com
FILE NAME	T:(82)31-433-3159
Spring return	R