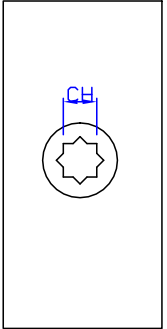
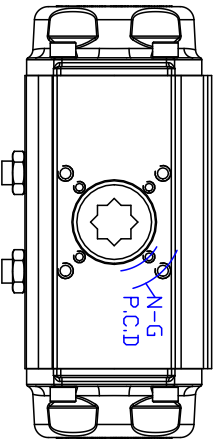
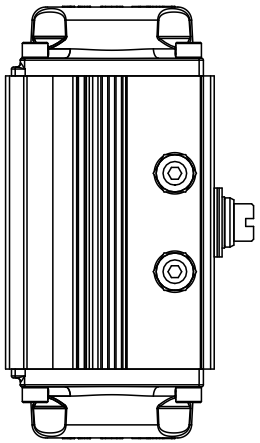
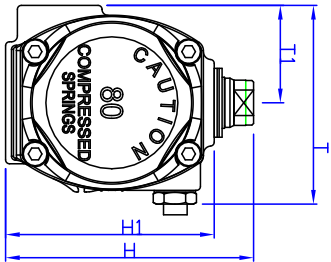
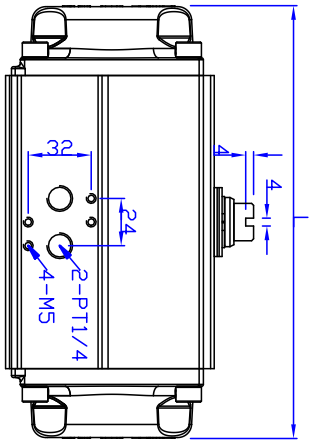
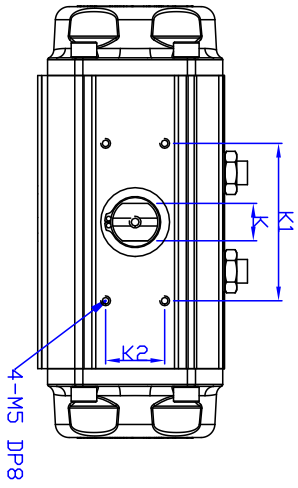
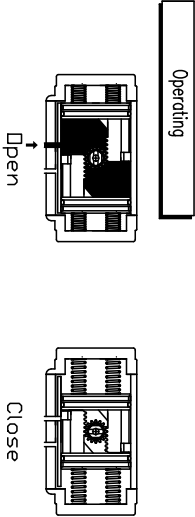


RACK&PINION / SPRING RETURN / RS80



REV.NO.	REVISION DESCRIPTION	DRAWN / DATE	REVIEWED / DATE	APPROVED / DATE
△	도크서제, F05 추가	노윤아 / 170425		
△	커버 형상변경	노윤아 / 180816		



MAJOR PART LIST

NO.	PART NAME	MATERIAL
1	BODY	ALUMINIUM
2	SHAFT	STEEL ALLOY (NICKEL COATING)
3	PISTON	ALUMINIUM
4	COVER	ALUMINIUM

SPECIFICATIONS

1. Operating fluid : Compressed dry air
2. Operating pressure : 4Bar~7Bar
3. Operating temperature : -20~80°

■ DIMENSION(mm)

MODEL	K1	K2	ISO	ØP.C.D	N-G(DP)	K	L	T	T1	H	H1	CH	DP	WEIGHT
RS80	80	30	F05/F07	50/70	4-M6/M8(1/15)	19	220	101	49.5	126	106	17*17	19	3.3kg

PRODUCT NAME Pneumatic actuator		TITLE DRAWING	
MODEL RS80	HARDNESS -	DRAWING NO. PARS80-001	REV. 7
MATERIAL -	APPROVED DATE	KOSAPLUS Co.,Ltd	
DRAWING DATE		DRAWING DATE	