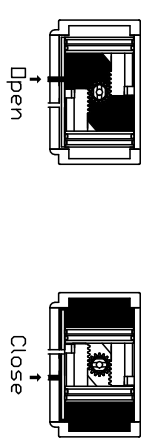
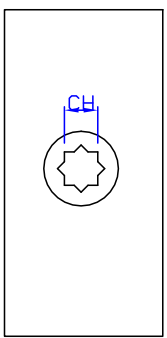
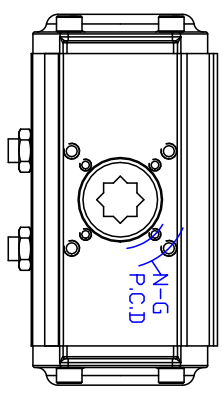
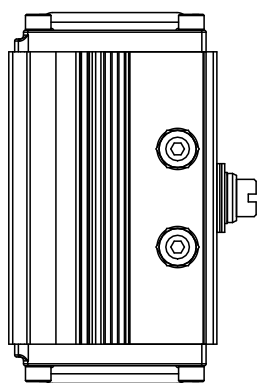
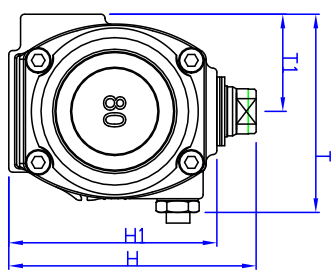
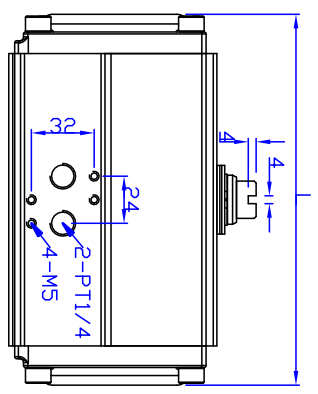
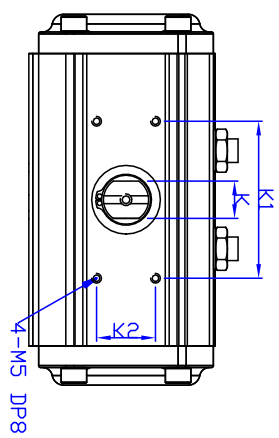
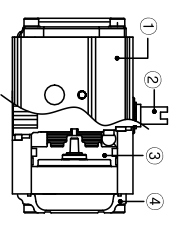


# RACK & PINION / SPRING RETURN / RD80



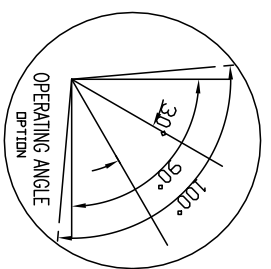
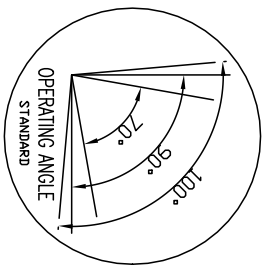
### MAJOR PART LIST

NO.	PART NAME	MATERIAL
1	BODY	ALUMINIUM
2	SHAFT	STEEL ALLOY (NICKEL COATING)
3	PISTON	ALUMINIUM
4	COVER	ALUMINIUM



### SPECIFICATIONS

1. Operating fluid : Compressed dry air
2. Operating pressure : 4Bar~7Bar
3. Operating temperature : -20~80°



■ DIMENSION(mm)

MODEL	K1	K2	ISO	ΦP.C.D	N-(GD)	K	L	T	T1	H	H1	CH	DP	WEIGHT
RD80	80	30	F05/F07	50/70	4-M6/M8(11/15)	19	189	101	49.5	126	106	17*17	19	2.9kg

PRODUCT NAME Pneumatic actuator		TITLE DRAWING	
MODEL RD80	HARDNESS -	DRAWING NO. PARD80-001	REV. 6
MATERIAL -	APPROVED DATE	KOSAPLUS Co.,Ltd	
DRAWING DATE		DRAWING NO. PARD80-001	