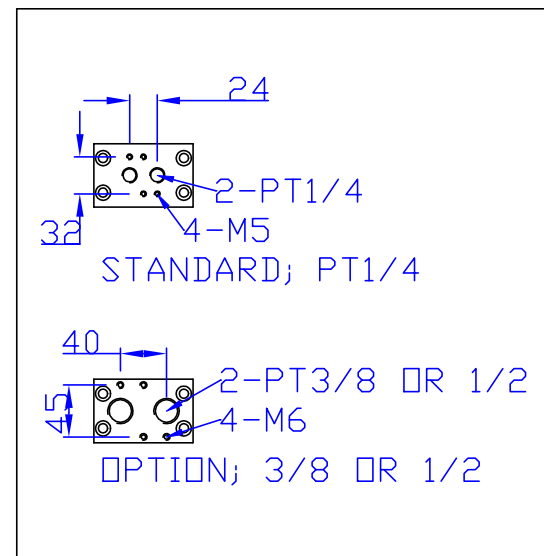
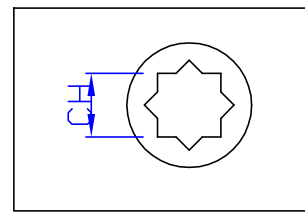
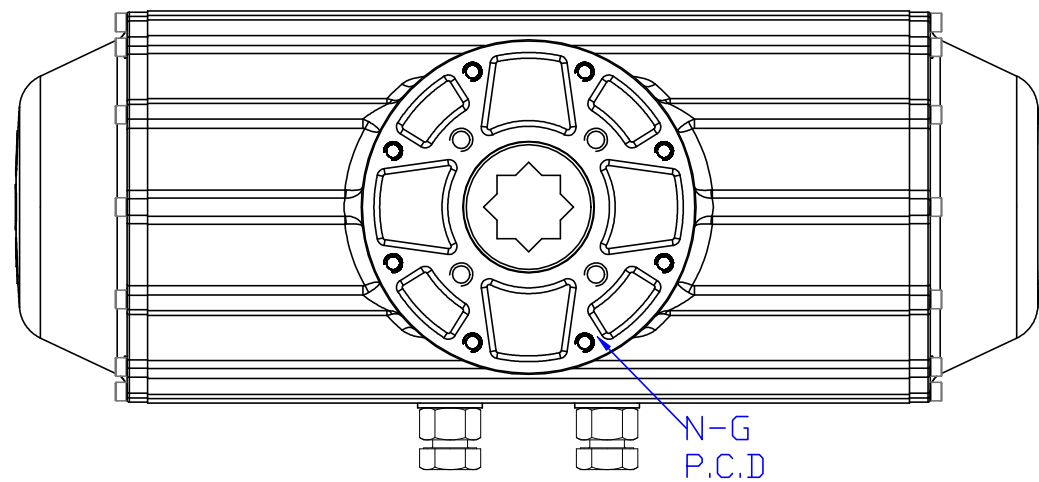
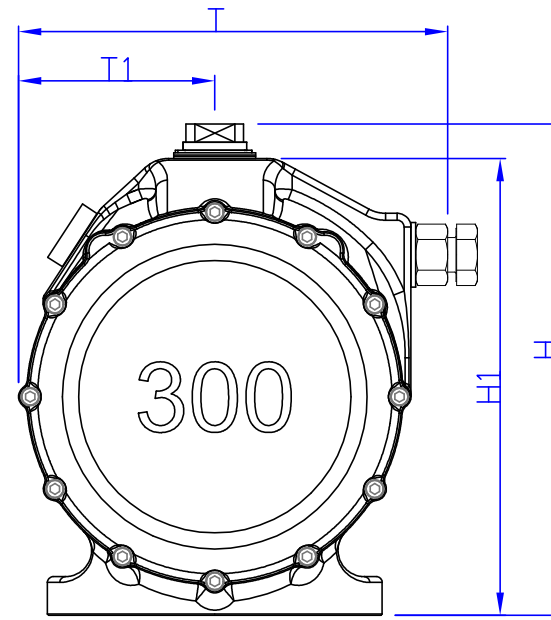
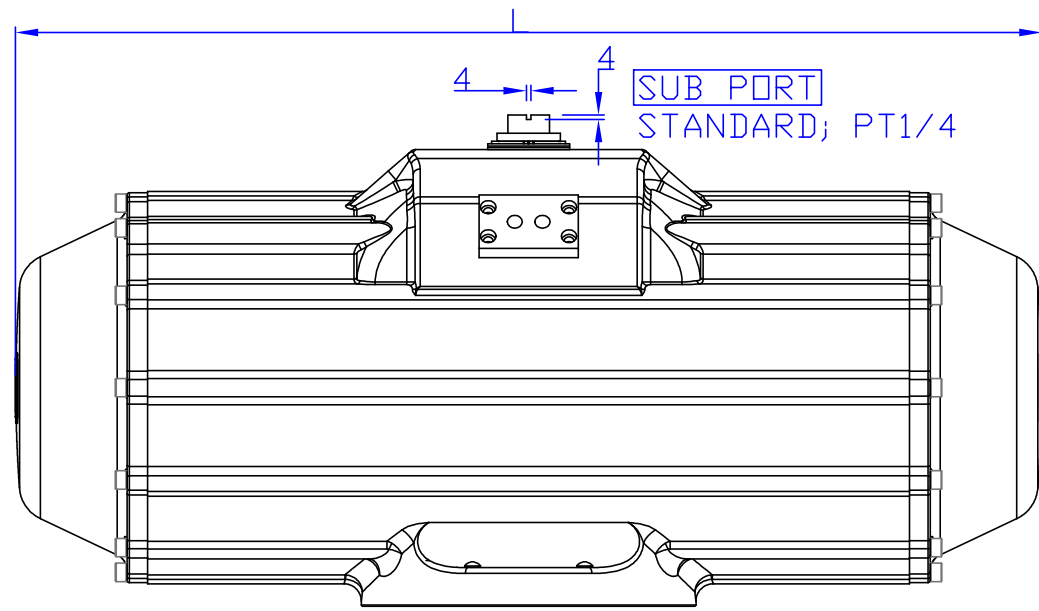
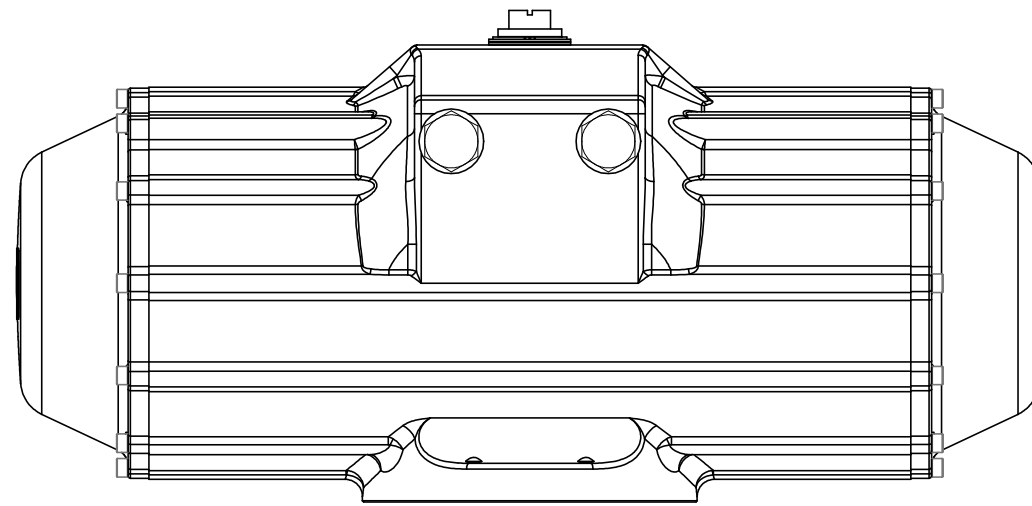
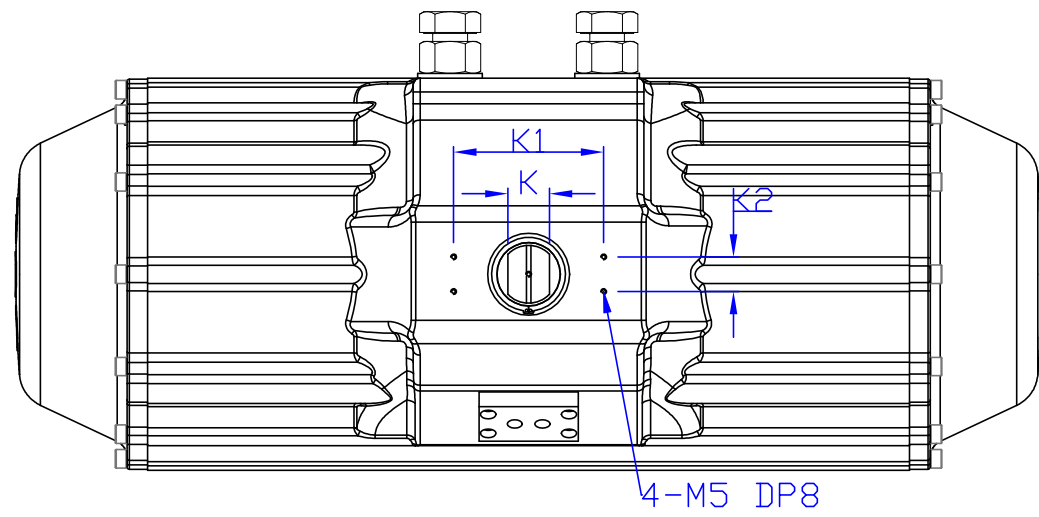
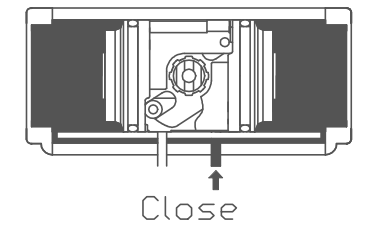
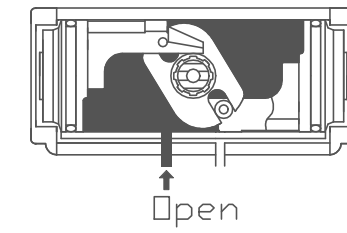


SCOTCH-YOKE / AD300

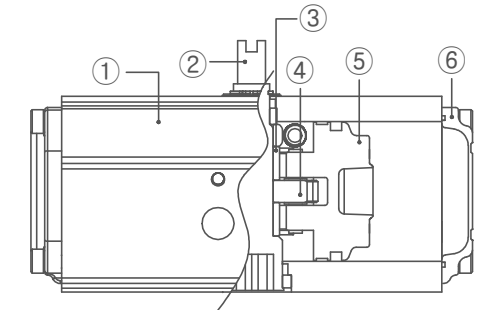


REV.NO.	REVISION DESCRIPTION	DRAWN / DATE	REVIEWED / DATE	APPROVED / DATE
△	최초작성	노을아/16.01.15		
△	-	-		

Operating



MAJOR PART LIST



NO.	PART NAME	MATERIAL
1	BODY	FCD
2	SHAFT	STEEL ALLOY (NICKEL COATING)
3	SHAFT ROLLER	ENGINEERING PLASTIC
4	CRANK	STEEL ALLOY
5	PISTON	ALUMINUM
6	COVER	FCD

SPECIFICATIONS

- Operating fluid : Compressed dry air
- Operating pressure : 4Bar~7Bar
- Operating temperature : -20~80°

■ DIMENSION(mm)

MODEL	K1	K2	ISO	øP.C.D	N-G(DP)	K	L	T	T1	H	H1	CH	DP	WEIGHT
AD300	130	30	F16/F25	165/254	4-M20(30)/8-M16(23)	36	889	372	170	408	378	55*55	60	78kg

PRODUCT NAME Pneumatic actuator		KOSAPLUS Co.,Ltd <small>KOREA</small>	
MODEL	AD300	TITLE DRAWING	
MATERIAL	HARDNESS	DRAWING NO. PAAD300-001	
DRAWING DATE	APPROVED DATE	REV.	0