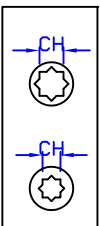
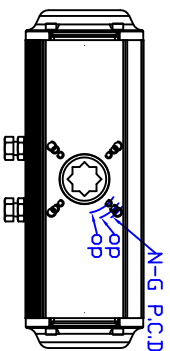
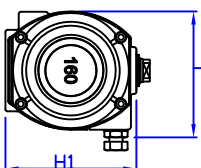
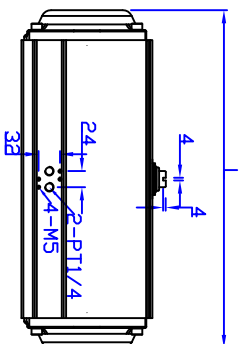
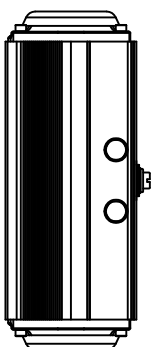
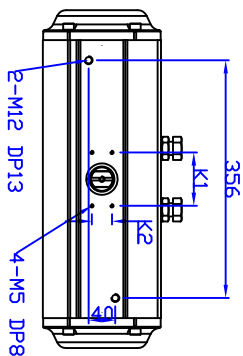
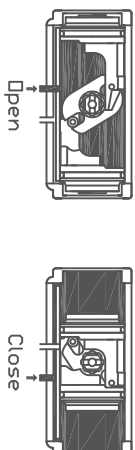


SCOTCH-YOKE / DOUBLE ACTING / AD160

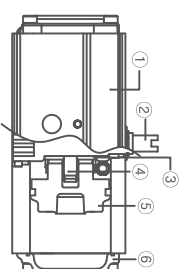


REV. NO.	REVISION DESCRIPTION	DRAWN / DATE	REVIEWED / DATE	APPROVED / DATE
△	아이솔드림 누락부분 추가	노종익 / 190926		
△	아이솔드림 위치 수정	노종익 / 200626		

Operating



MAJOR PART LIST



NO.	PART NAME	MATERIAL
1	BODY	ALUMINIUM
2	SHAFT	STEEL ALLOY (NICKEL COATING)
3	SHAFT ROLLER	ENGINEERING PLASTIC
4	CRANK	STEEL ALLOY
5	PISTON	ALUMINIUM
6	COVER	ALUMINIUM

SPECIFICATIONS

1. Operating fluid : Compressed dry air
2. Operating pressure : 4Bar~7Bar
3. Operating temperature : -20~80°

DIMENSION(mm)

MODEL	K1	K2	ISO	ØP.C.D	N-G(DP)	K	L	T	T1	H	H1	CH	DP	WEIGHT
AD160	80	30	F14	140	4-M16 (25)	24	506	188	88	216	196	36*36	30	23.7kg
			F10/F12	102/125	4-M10/M12 (18/25)							27*27	30	

PRODUCT NAME
Pneumatic actuator

MODEL
AD160

TITLE
DRAWING

KOSAPLUS Co.,Ltd

DRAWING DATE
APPROVED DATE

DRAWING NO.
PAAD160-001

REV.
9